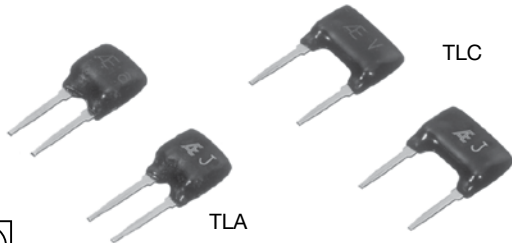


**Precision Thin Film Resistor (Conformally Coated)**



Available  
**RoHS**  
COMPLIANT

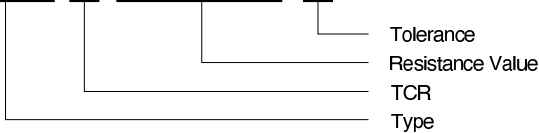
TCR, RESISTANCE RANGE, TOLERANCE, RATED POWER				
Type	TCR (ppm/°C) -25°C to +125°C*	Resistance Range (Ω)	Resistance Tolerance (%)*	Rated Power (W) at 70°C
TLA	0±10 (C) 0±5 (X)	100K to 5M	±0.05 (A) ±0.1 (B) ±0.5 (D) ±1 (F)	0.125
TLC		200K to 10M	±0.02 (Q) ±0.05 (A) ±0.1 (B) ±0.5 (D) ±1 (F)	0.25

\* Symbols in parentheses are for type number composition.

**COMPOSITION OF TYPE NUMBER**

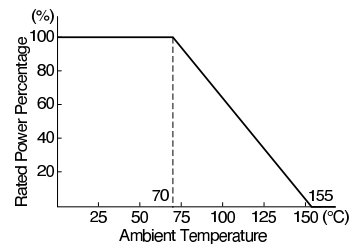
Example:

**TLA X 500K00 B**

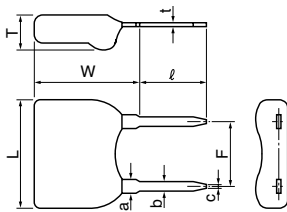


Resistance value, in ohm, is expressed by a series of six characters, five of which represent significant digits. K or M is a dual-purpose letter that designates both the value range (K for kilo-ohm; M for mega-ohm) and the location of decimal point.

**POWER DERATING CURVE**

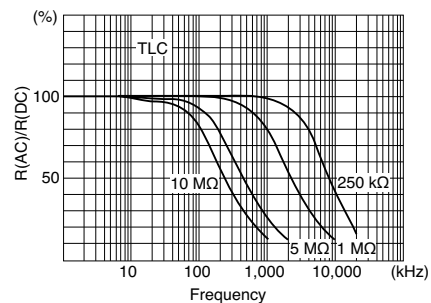


**CONFIGURATION (DIMENSIONS IN mm)**



Type	TLA	TLC
L	5.3±0.5	7.3±0.5
W	6.2±0.5	
T	2.2±0.5	
F	2.54±0.25   5.08±0.25	
l	5±1	
t	0.3±0.05	
a	1.0±0.05	
b	0.65±0.05	
c	0.4±0.05	

**FREQUENCY CHARACTERISTICS**



**PERFORMANCE**

Parameters	Test Condition	ALPHA Specification	ALPHA Typical Test Data
Max. Rated Operating Temperature Working Temperature Range Maximum Working Voltage		70°C -25°C to +155°C TLA = 250V, TLC = 300V	
Temperature Cycling Overload	-25°C/30 min., Room Temperature/5 min., +55°C/30 min., 5 cycles Rated Voltage x 2.5, 5 sec.	±0.05% ±0.05%	±0.01% ±0.0025%
Solderability Resistance to Solvents	235°C, 2 sec. Isopropyl Alcohol	over 75% coverage no damage	
Low Temperature Storage Terminal Strength	-25°C, No Load, 2 hrs. 0.908 kg (2 pounds), 10 sec.	±0.05% ±0.05%	±0.0025% ±0.0025%
Dielectric Withstanding Voltage Insulation Resistance Resistance to Soldering Heat Moisture Resistance	Atmospheric: AC 300V, 1 min. DC 100V, 1 min. 350°C, 3 sec. +65°C to -10°C, 90% RH to 98% RH, Rated Voltage, 10 cycles (240 hrs.)	±0.03% over 10,000 MΩ ±0.03% ±0.1%	±0.0025% over 10,000 MΩ ±0.01% ±0.05%
Life (Rated Load)	70°C, Rated Power, 1.5 hrs. – ON, 0.5 hr. – OFF, 1,000 hrs.	±0.1%	±0.01%
Storage Life	15°C to 35°C, 15% RH to 75% RH, No Load, 10,000 hrs.	±0.02%	±0.01%
High Temperature Exposure	155°C, No Load, 1,000 hrs.	±0.05%	±0.02%
Current Noise		-25 dB	-35 dB