

## BLF 5.08HC/07/180 SN OR BX

Weidmüller Interfaces GmbH & Co. KG

Postfach 3030

32760 Detmold

Tel. +49 5231 14-0

Fax. +49 5231 14-2083

info@weidmueller.com

www.weidmueller.com

### Product image



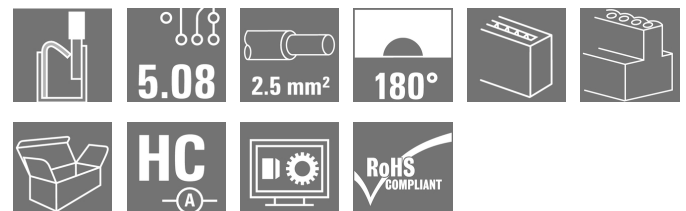
Similar to illustration

Just as reliable as the millionfold proven original and featuring innovative details:

The BLF 5.08HC PUSH IN version of the BLZP 5.08HC female connector is not only different in terms of connection system; it also has a more compact design. Weidmüller's innovative PUSH IN spring connection system stands for the future of easy and tool-free wire connection. HC = High Current.

In terms of versatility, the BLF 5.08HC offers just as much as the version which served as a model:

- 3 tested-and-proven wire outlet directions provide the usual flexibility for application-specific design
- 4 flange variations and the patented release latch allow the locking concept to be based on the requirements of the user
- Use the BLF 5.08HC and SL 5.08HC plug combination to reach the max. rated specifications



### General ordering data

|              |                                                                                                                                         |
|--------------|-----------------------------------------------------------------------------------------------------------------------------------------|
| Version      | PCB plug-in connector, female plug, 5.08 mm, Number of poles: 7, 180°, PUSH IN, Spring connection, Clamping range, max. : 3.31 mm², Box |
| Order No.    | <a href="#">1013740000</a>                                                                                                              |
| Type         | BLF 5.08HC/07/180 SN OR BX                                                                                                              |
| GTIN (EAN)   | 4032248721856                                                                                                                           |
| Qty.         | 48 pc(s).                                                                                                                               |
| Product data | IEC: 400 V / 24 A / 0.2 - 2.5 mm²<br>UL: 300 V / 18.5 A / AWG 26 - AWG 12                                                               |
| Packaging    | Box                                                                                                                                     |

**BLF 5.08HC/07/180 SN OR BX**

Weidmüller Interfaces GmbH &amp; Co. KG

Postfach 3030

32760 Detmold

Tel. +49 5231 14-0

Fax. +49 5231 14-2083

info@weidmuller.com

www.weidmuller.com

**Technical data****Dimensions and weights**

|                |          |                 |            |
|----------------|----------|-----------------|------------|
| Depth          | 27.7 mm  | Depth (inches)  | 1.091 inch |
| Height         | 14.2 mm  | Height (inches) | 0.559 inch |
| Net weight     | 12.74 g  | Width           | 35.56 mm   |
| Width (inches) | 1.4 inch |                 |            |

**System Parameters**

|                                              |                                     |                                            |                     |
|----------------------------------------------|-------------------------------------|--------------------------------------------|---------------------|
| Product family                               | OMNIMATE Signal - series BL/SL 5.08 | Type of connection                         | Field connection    |
| Wire connection method                       | PUSH IN, Spring connection          | Pitch in mm (P)                            | 5.08 mm             |
| Pitch in inches (P)                          | 0.2 inch                            | Conductor outlet direction                 | 180°                |
| Number of poles                              | 7                                   | L1 in mm                                   | 30.48 mm            |
| L1 in inches                                 | 1.2 inch                            | Number of rows                             | 1                   |
| Pin series quantity                          | 1                                   | Rated cross-section                        | 2.5 mm <sup>2</sup> |
| Touch-safe protection acc. to DIN VDE 57 106 | Safe from finger touch              | Touch-safe protection acc. to DIN VDE 0470 | IP 20               |
| Volume resistance                            | ≤5 mΩ                               | Can be coded                               | Yes                 |
| Stripping length                             | 10 mm                               | Screwdriver blade                          | 0.6 x 3.5           |
| Screwdriver blade standard                   | DIN 5264                            | Plugging cycles                            | 25                  |
| Plugging force/pole, max.                    | 7 N                                 | Pulling force/pole, max.                   | 5.5 N               |

**Material data**

|                                       |          |                                       |                            |
|---------------------------------------|----------|---------------------------------------|----------------------------|
| Insulating material                   | PBT      | Colour                                | orange                     |
| Colour chart (similar)                | RAL 2000 | Insulating material group             | IIIa                       |
| Comparative Tracking Index (CTI)      | ≥ 200    | Insulation strength                   | ≥ 10 <sup>8</sup> Ω        |
| UL 94 flammability rating             | V-0      | Contact material                      | CuSn                       |
| Contact surface                       | tinned   | Layer structure of plug contact       | 4...8 μm Sn hot-dip tinned |
| Storage temperature, min.             | -40 °C   | Storage temperature, max.             | 70 °C                      |
| Operating temperature, min.           | -50 °C   | Operating temperature, max.           | 100 °C                     |
| Temperature range, installation, min. | -30 °C   | Temperature range, installation, max. | 100 °C                     |

**Conductors suitable for connection**

|                                                 |                      |                                                 |                                                                                                                                                                        |
|-------------------------------------------------|----------------------|-------------------------------------------------|------------------------------------------------------------------------------------------------------------------------------------------------------------------------|
| Clamping range, min.                            | 0.13 mm <sup>2</sup> | Clamping range, max.                            | 3.31 mm <sup>2</sup>                                                                                                                                                   |
| Wire connection cross section AWG, min.         | AWG 26               | Wire connection cross section AWG, max.         | AWG 12                                                                                                                                                                 |
| Solid, min. H05(07) V-U                         | 0.2 mm <sup>2</sup>  | Solid, max. H05(07) V-U                         | 2.5 mm <sup>2</sup>                                                                                                                                                    |
| Flexible, min. H05(07) V-K                      | 0.2 mm <sup>2</sup>  | Flexible, max. H05(07) V-K                      | 2.5 mm <sup>2</sup>                                                                                                                                                    |
| w. plastic collar ferrule, DIN 46228 pt 4, min. | 0.25 mm <sup>2</sup> | w. plastic collar ferrule, DIN 46228 pt 4, max. | 2.5 mm <sup>2</sup>                                                                                                                                                    |
| w. wire end ferrule, DIN 46228 pt 1, min.       | 0.25 mm <sup>2</sup> | w. wire end ferrule, DIN 46228 pt 1, max.       | 2.5 mm <sup>2</sup>                                                                                                                                                    |
| Plug gauge in accordance with EN 60999 a x b; ø | 2.8 mm x 2.0 mm      | Reference text                                  | The outside diameter of the plastic collar should not be larger than the pitch (P). Length of ferrules is to be chosen depending on the product and the rated voltage. |

## BLF 5.08HC/07/180 SN OR BX

Weidmüller Interfaces GmbH & Co. KG

Postfach 3030

32760 Detmold

Tel. +49 5231 14-0

Fax. +49 5231 14-2083

## Technical data

### Rated data acc. to IEC

|                                                                           |                        |                                                                       |                   |
|---------------------------------------------------------------------------|------------------------|-----------------------------------------------------------------------|-------------------|
| tested acc. to standard                                                   | IEC 60664-1, IEC 61984 | Rated current, min. number of poles (Tu=20°C)                         | 24 A              |
| Rated current, max. number of poles (Tu=20°C)                             | 19 A                   | Rated current, min. number of poles (Tu=40°C)                         | 21 A              |
| Rated current, max. number of poles (Tu=40°C)                             | 16.5 A                 | Rated voltage for surge voltage class / pollution degree II/2         | 400 V             |
| Rated voltage for surge voltage class / pollution degree III/2            | 320 V                  | Rated voltage for surge voltage class / pollution degree III/3        | 250 V             |
| Rated impulse voltage for surge voltage class/ pollution degree II/2      | 4 kV                   | Rated impulse voltage for surge voltage class/ pollution degree III/2 | 4 kV              |
| Rated impulse voltage for surge voltage class/ contamination degree III/3 | 4 kV                   | Short-time withstand current resistance                               | 3 x 1s with 120 A |

### Rated data acc. to CSA

|                                   |        |                                   |                                                                        |
|-----------------------------------|--------|-----------------------------------|------------------------------------------------------------------------|
| Institute (CSA)                   |        | Certificate No. (CSA)             | 200039-1121690                                                         |
| Rated voltage (Use group B / CSA) | 300 V  | Rated voltage (Use group D / CSA) | 300 V                                                                  |
| Rated current (Use group D / CSA) | 10 A   | Wire cross-section, AWG, min.     | AWG 26                                                                 |
| Wire cross-section, AWG, max.     | AWG 12 | Reference to approval values      | Specifications are maximum values, details - see approval certificate. |

### Rated data acc. to UL 1059

|                                       |                                                                        |                                       |        |
|---------------------------------------|------------------------------------------------------------------------|---------------------------------------|--------|
| Institute (cURus)                     |                                                                        | Certificate No. (cURus)               | E60693 |
| Rated voltage (Use group B / UL 1059) | 300 V                                                                  | Rated voltage (Use group D / UL 1059) | 300 V  |
| Rated current (Use group B / UL 1059) | 18.5 A                                                                 | Rated current (Use group D / UL 1059) | 10 A   |
| Wire cross-section, AWG, min.         | AWG 26                                                                 | Wire cross-section, AWG, max.         | AWG 12 |
| Reference to approval values          | Specifications are maximum values, details - see approval certificate. |                                       |        |

### Packing

|           |        |            |        |
|-----------|--------|------------|--------|
| Packaging | Box    | VPE length | 35 mm  |
| VPE width | 135 mm | VPE height | 350 mm |

### Type tests

|                              |            |                                                                                  |
|------------------------------|------------|----------------------------------------------------------------------------------|
| Test: Durability of markings | Standard   | DIN EN 61984 section 7.3.2 / 09.02 taking pattern from DIN EN 60068-2-70 / 07.96 |
|                              | Test       | mark of origin, type identification, pitch, type of material, date clock         |
|                              | Evaluation | available                                                                        |
|                              | Test       | durability                                                                       |
|                              | Evaluation | passed                                                                           |

**BLF 5.08HC/07/180 SN OR BX**

**Weidmüller Interfaces GmbH & Co. KG**

Postfach 3030

32760 Detmold

Tel. +49 5231 14-0

**Technical data**

Fax. +49 5231 14-2083

|                                               |                |                                                                                    |                              |
|-----------------------------------------------|----------------|------------------------------------------------------------------------------------|------------------------------|
| Test: Misengagement (Non-interchangeability)  | Standard       | DIN EN 61984 section 6.3 and 6.9.1 / 09.02, DIN EN 60512:13-5 / 1.08               |                              |
|                                               | Test           | 180° turned with coding elements                                                   |                              |
|                                               | Evaluation     | passed                                                                             |                              |
|                                               | Test           | visual examination                                                                 |                              |
| Test: Clampable cross section                 | Evaluation     | passed                                                                             |                              |
|                                               | Standard       | DIN EN 60999-1 section 7 and 9.1 / 12.00, DIN EN 60947-1 section 8.2.4.5.1 / 04.08 |                              |
|                                               | Conductor type | Type of conductor and conductor cross-section                                      | solid 0.2 mm <sup>2</sup>    |
|                                               |                | Type of conductor and conductor cross-section                                      | stranded 0.2 mm <sup>2</sup> |
|                                               |                | Type of conductor and conductor cross-section                                      | solid 2.5 mm <sup>2</sup>    |
|                                               |                | Type of conductor and conductor cross-section                                      | stranded 2.5 mm <sup>2</sup> |
|                                               |                | Type of conductor and conductor cross-section                                      | AWG 26/1                     |
|                                               |                | Type of conductor and conductor cross-section                                      | AWG 26/19                    |
|                                               |                | Type of conductor and conductor cross-section                                      | AWG 14/1                     |
| Type of conductor and conductor cross-section |                | AWG 14/19                                                                          |                              |
| Evaluation                                    | passed         |                                                                                    |                              |

**BLF 5.08HC/07/180 SN OR BX**

**Weidmüller Interfaces GmbH & Co. KG**

Postfach 3030

32760 Detmold

Tel. +49 5231 14-0

**Technical data**

Fax. +49 5231 14-2083

Test for damage to and accidental loosening of conductors

|                |                                                                       |
|----------------|-----------------------------------------------------------------------|
| Standard       | DIN EN 60999-1 section 9.4 / 12.00                                    |
| Requirement    | 0.2 kg <a href="mailto:info@weidmueller.com">info@weidmueller.com</a> |
| Conductor type | Type of conductor and conductor cross-section AWG 26/1                |
|                | Type of conductor and conductor cross-section AWG 26/19               |
| Evaluation     | passed                                                                |
| Requirement    | 0.3 kg                                                                |
| Conductor type | Type of conductor and conductor cross-section H05V-U0.5               |
|                | Type of conductor and conductor cross-section H05V-K0.5               |
| Evaluation     | passed                                                                |
| Requirement    | 0.7 kg                                                                |
| Conductor type | Type of conductor and conductor cross-section H07V-U2.5               |
|                | Type of conductor and conductor cross-section H07V-K2.5               |
| Evaluation     | passed                                                                |
| Requirement    | 0.9 kg                                                                |
| Conductor type | Type of conductor and conductor cross-section AWG 12/1                |
|                | Type of conductor and conductor cross-section AWG 12/19               |
| Evaluation     | passed                                                                |

**BLF 5.08HC/07/180 SN OR BX**

**Weidmüller Interfaces GmbH & Co. KG**

Postfach 3030

32760 Detmold

Tel. +49 5231 14-0

Fax. +49 5231 14-2083

**Technical data**

|                |                                               |                                    |                             |
|----------------|-----------------------------------------------|------------------------------------|-----------------------------|
| Pull-out test  | Standard                                      | DIN EN 60999-1 section 9.5 / 12.00 |                             |
|                | Requirement                                   | ≥10 N info@weidmueller.com         |                             |
| Conductor type | Type of conductor and conductor cross-section | AWG 26/1                           | and conductor cross-section |
|                | Type of conductor and conductor cross-section | AWG 26/19                          |                             |
| Evaluation     | passed                                        |                                    |                             |
| Requirement    | ≥20 N                                         |                                    |                             |
| Conductor type | Type of conductor and conductor cross-section | H05V-K0.5                          |                             |
|                | Type of conductor and conductor cross-section | H05V-U0.5                          |                             |
| Evaluation     | passed                                        |                                    |                             |
| Requirement    | ≥50 N                                         |                                    |                             |
| Conductor type | Type of conductor and conductor cross-section | H07V-U2.5                          |                             |
|                | Type of conductor and conductor cross-section | H07V-K2.5                          |                             |
| Evaluation     | passed                                        |                                    |                             |
| Requirement    | ≥60 N                                         |                                    |                             |
| Conductor type | Type of conductor and conductor cross-section | AWG 12/1                           |                             |
|                | Type of conductor and conductor cross-section | AWG 12/19                          |                             |
| Evaluation     | passed                                        |                                    |                             |

**Classifications**

|             |             |             |             |
|-------------|-------------|-------------|-------------|
| ETIM 6.0    | EC002638    | ETIM 7.0    | EC002638    |
| eClass 9.0  | 27-44-03-09 | eClass 9.1  | 27-44-03-09 |
| eClass 10.0 | 27-44-03-09 | eClass 11.0 | 27460202    |

**Important note**

IPC conformity      Conformity: The products are developed, manufactured and delivered according international recognized standards and norms and comply with the assured properties in the data sheet resp. fulfill decorative properties in accordance with IPC-A-610 "Class 2". Further claims on the products can be evaluated on request.

**Approvals**

Approvals



|                       |         |
|-----------------------|---------|
| ROHS                  | Conform |
| UL File Number Search | E60693  |

**BLF 5.08HC/07/180 SN OR BX**

**Weidmüller Interfaces GmbH & Co. KG**

Postfach 3030

32760 Detmold

Tel. +49 5231 14-0

Fax. +49 5231 14-2083

[info@weidmueller.com](mailto:info@weidmueller.com)

[www.weidmueller.com](http://www.weidmueller.com)

**Technical data**

**Downloads**

|                                             |                                                                                                                                                                                                                                                                                                                                                                                                                                                                                                                                                                                             |                                                              |
|---------------------------------------------|---------------------------------------------------------------------------------------------------------------------------------------------------------------------------------------------------------------------------------------------------------------------------------------------------------------------------------------------------------------------------------------------------------------------------------------------------------------------------------------------------------------------------------------------------------------------------------------------|--------------------------------------------------------------|
| Approval/Certificate/Document of Conformity | <a href="#">Declaration of the Manufacturer</a>                                                                                                                                                                                                                                                                                                                                                                                                                                                                                                                                             | <a href="http://www.weidmueller.com">www.weidmueller.com</a> |
| Brochure/Catalogue                          | <a href="#">FL DRIVES EN</a><br><a href="#">MB DEVICE MANUF. EN</a><br><a href="#">FL DRIVES DE</a><br><a href="#">CAT 2 PORTFOLIOGUIDE EN</a><br><a href="#">FL BUILDING SAFETY EN</a><br><a href="#">FL APPL LED LIGHTING EN</a><br><a href="#">FL INDUSTR.CONTROLS EN</a><br><a href="#">FL MACHINE SAFETY EN</a><br><a href="#">FL HEATING ELECTR EN</a><br><a href="#">FL APPL INVERTER EN</a><br><a href="#">FL BASE STATION EN</a><br><a href="#">FL ELEVATOR EN</a><br><a href="#">FL POWER SUPPLY EN</a><br><a href="#">FL 72H SAMPLE SER EN</a><br><a href="#">PO OMNIMATE EN</a> |                                                              |
| Engineering Data                            | <a href="#">STEP</a>                                                                                                                                                                                                                                                                                                                                                                                                                                                                                                                                                                        |                                                              |
| Engineering Data                            | <a href="#">EPLAN, WSCAD, Zuken E3.S</a>                                                                                                                                                                                                                                                                                                                                                                                                                                                                                                                                                    |                                                              |

**BLF 5.08HC/07/180 SN OR BX**

**Weidmüller Interfaces GmbH & Co. KG**

Postfach 3030

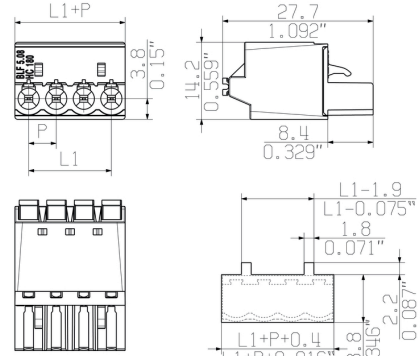
32760 Detmold

Tel. +49 5231 14-0

Fax. +49 5231 14-2083

**Drawings**

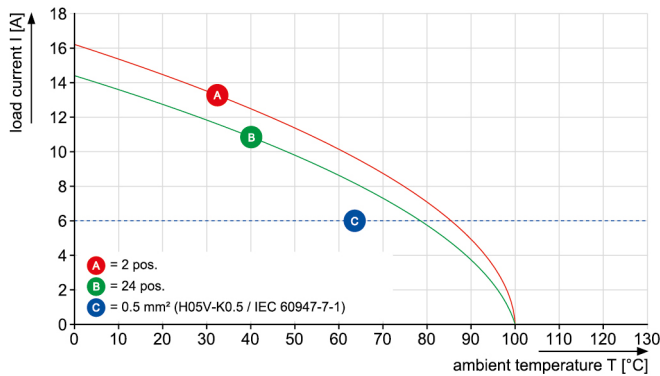
**Dimensional drawing** [info@weidmueller.com](mailto:info@weidmueller.com)



MIN. FRONT PLATE CUT-OUT

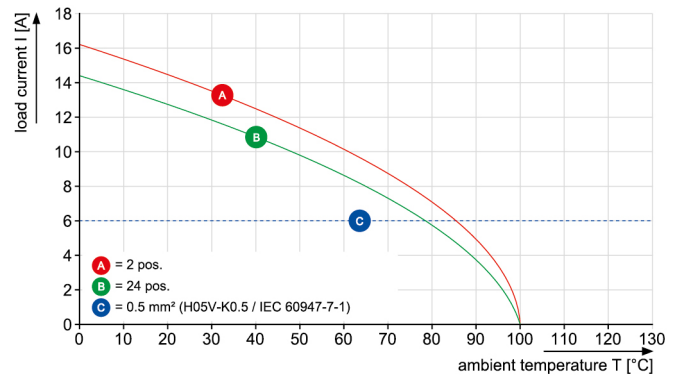
**Graph**

BLF 5.08HC/./180 - SL 5.08HC/./180



**Graph**

BLF 5.08HC/./180 - SL 5.08HC/./180



Uncompromising functionality  
High vibration resistance



**BLF 5.08HC/07/180 SN OR BX**

**Weidmüller Interfaces GmbH & Co. KG**

Postfach 3030

32760 Detmold

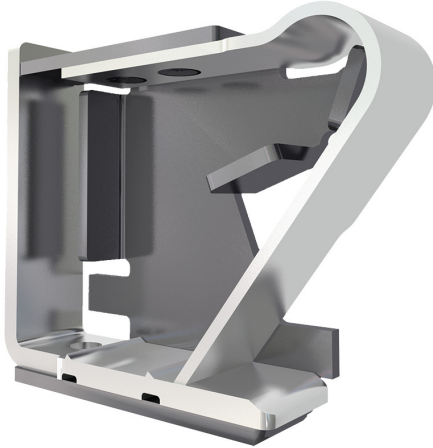
Tel. +49 5231 14-0

Fax. +49 5231 14-2083

[info@weidmueller.com](mailto:info@weidmueller.com)

**Drawings**

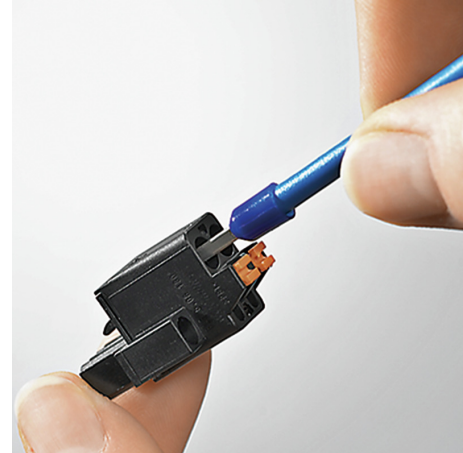
**Product benefits**



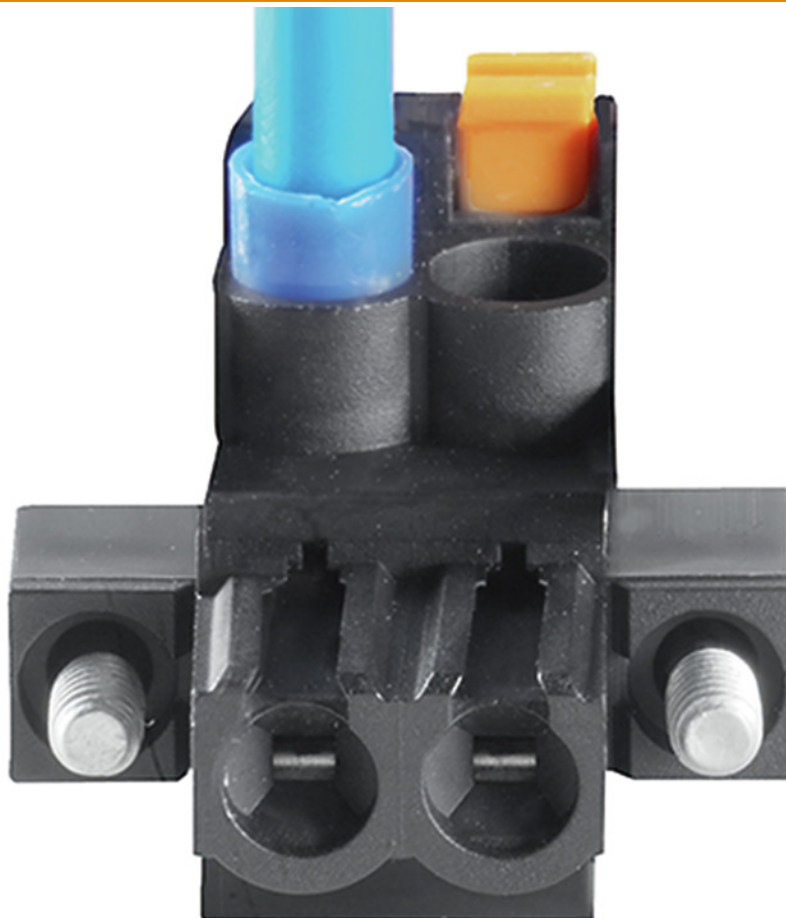
Solid PUSH IN contact  
Safe and durable

**Product benefits**

**Product benefits**



Cost-effective wiring  
Quick and intuitive operation



Wide clamping range  
Tool-free wire connection