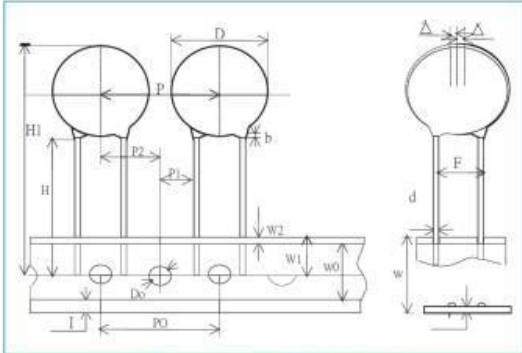
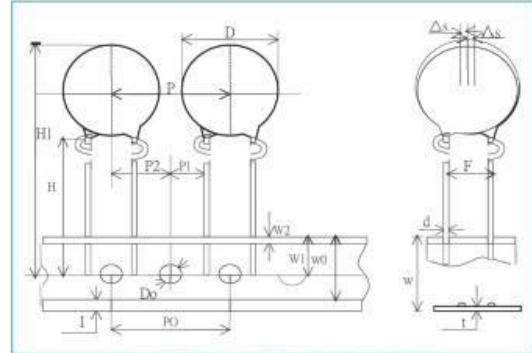


Taping Specifications

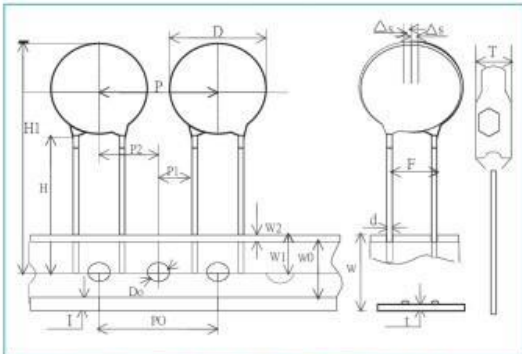
Taping (Radial) -- Lead Spacing $F = 9.5 / 12.5 \pm 0.8$



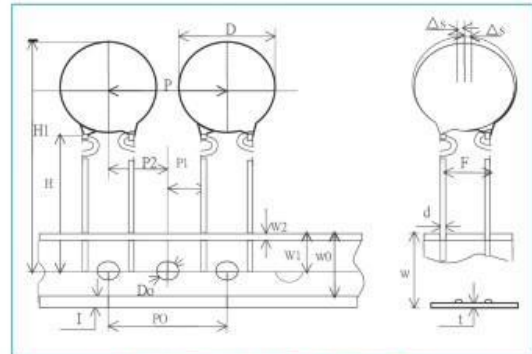
Straight 直脚 (FS)



Outside crimped 外灣 (FO)



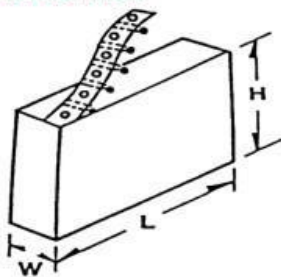
Vertical crimped 上下灣 (AA)



Inside crimped 內灣 (FI)

Item	Code	Standard (mm)	Tolerance (mm)	Item	Code	Standard (mm)	Tolerance (mm)	
Pitch of component	P	25.4	± 1.0	Feed hole center to lead center	P1	7.95/6.35	± 0.8	
Feed hole pitch	P0	25.4	± 0.3	Feed hole center to body center	P2	12.7	± 1.3	
Component alignment R-L	Δs	0.0	± 2.0	Lead to lead distance	F	9.5/12.5	± 0.8	
Tape width	W	18	± 0.5	Hold position	W1	9.0	+0.75/-0.05	
Hold down tape width	W0	10.0	min	Height of component from tape center	Straight Crimped	H	20.0	+1.5/-1.0
Hold down tape position	W2	1.5	± 1.5				16.0	± 1.0
Component height	H1	33.0	max	Lead wire protrusion	I	6.0	min	
Feed hole diameter	D0	4.0	± 0.3	Diameter of Lead	d	0.6	+0.06/-0.05	
Total tape thickness	t	0.6	± 0.2	Diameter of Diso	D	See table of each series		
Coating Extension	b	3.0	max	Thickness of Capacitor Body	T	Differ in each product		

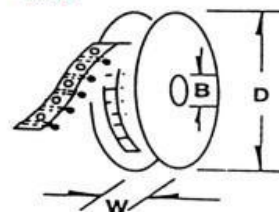
AMMO PACK



H = 241 ± 5 mm
L = 332 ± 5 mm
W = 42 ± 3 mm

Acceptable to standard radial type cartridge.
可接受標準輻射式盒包裝

REEL

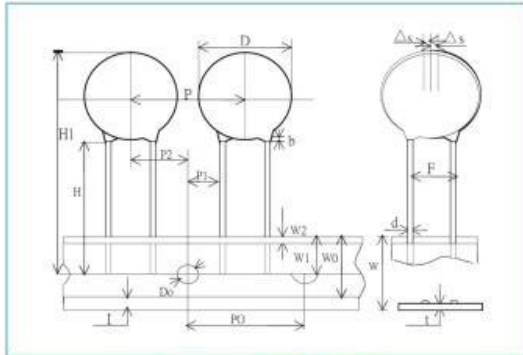


$D \leq 354$ (13.93)
 $B \geq 21$ (0.83") but
 ≤ 30 (1.18")
 $W \leq 55$ (2.16)

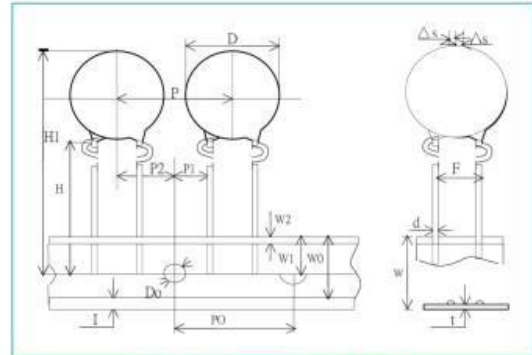
Acceptable to standard radial type cartridge with a few extra accessories. Reeled axials are also acceptable to standard axial type cartridge with a few accessories.
可接受標準輻射式盒包裝和少部分額外配件，捲筒軸也可以接受標準軸類型和少部分額外配件

Taping Specifications

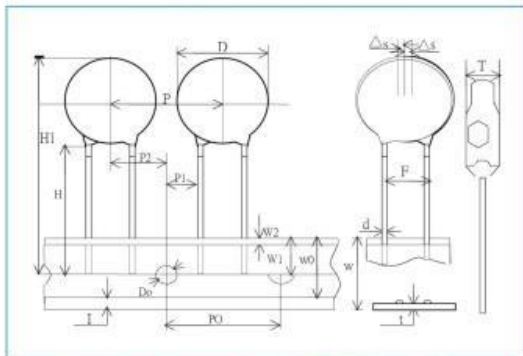
Taping (Radial) -- Lead Spacing $F = 5.0 / 6.35 / 7.5 \pm 0.8$



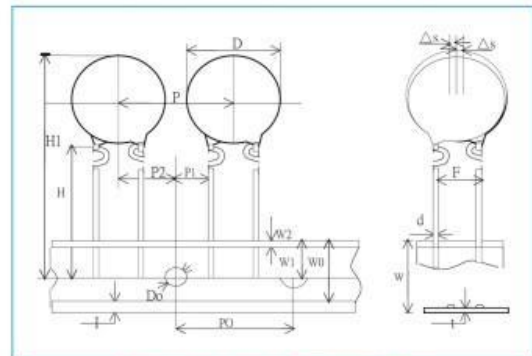
Straight 直脚 (FS)



Outside crimped 外灣(FO)



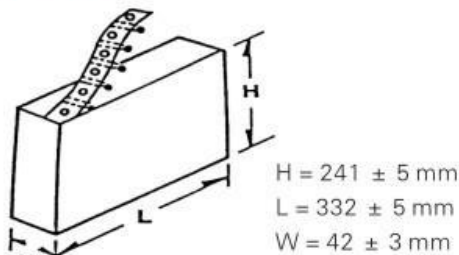
Vertical crimped 上下灣 (AA)



Inside crimped 內灣 (FI)

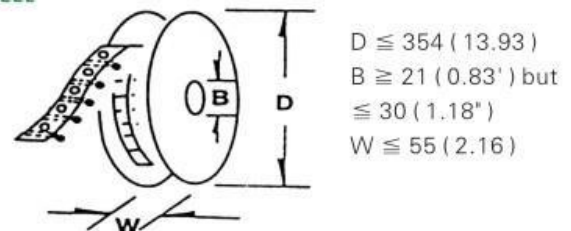
Item	Code	Standard (mm)	Tolerance (mm)	Item	Code	Standard(mm)	Tolerance (mm)
Pitch of component	P	12.7	± 1.0	Feed hole center to lead center	P1	3.65/3.25/2.6	± 0.8
Feed hole pitch	P0	12.7	± 0.3	Feed hole center to body center	P2	6.35	± 1.3
Component alignment R-L	Δs	0.0	± 2.0	Lead to lead distance	F	5.0/6.35/7.5	± 0.8
Tape width	W	18	± 0.5	Hold position	W1	9.0	+0.75/-0.05
Hold down tape width	W0	10.0	min	Height of component from tape center	H	20.0	+1.5/-1.0
Hold down tape position	W2	1.5	± 1.5			16.0	± 1.0
Component height	H1	33.0	max	Lead wire protrusion	l	6.0	min
Feed hole diameter	D0	4.0	± 0.3	Diameter of Lead	d	0.6	+0.06/-0.05
Total tape thickness	t	0.6	± 0.2	Diameter of Disco	D	See table of each series	
Coating Extension	b	3.0	max	Thickness of Capacitor Body	T	Differ in each product	

AMMO PACK



Acceptable to standard radial type cartridge.
可接受標準輻射式盒包裝

REEL



Acceptable to standard radial type cartridge with a few extra accessories. Reeled axials are also acceptable to standard axial type cartridge with a few accessories. 可接受標準輻射式盒包裝和少部分額外配件，捲筒軸也可以接受標準軸類型和少部分額外配件