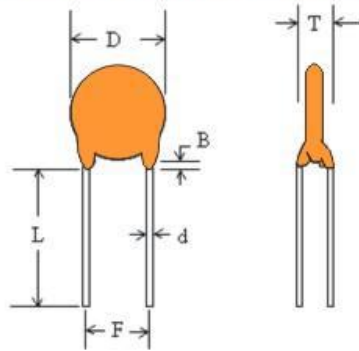


DC. Capacitor (S - C)

DC. 陶瓷電容器 3類(半導體型)

產品外觀圖 Outline Drawing



用途:

3類瓷介固定電容器是一種具有半導體特徵的瓷介電容器，該電容氣適於作旁路和耦合之用。該類陶瓷介質是以，在類別溫度範圍內電容量非線性變化來表徵的。

Applications:

Class 3 is a kind of ceramic dielectric fixed capacitor, It has the characteristics of semiconductor ceramic capacitor, The capacitor is suitable for the bypass and coupling. This kind of ceramic dielectric is in the category temperature range to manifestations of nonlinear capacitance change.

技術要求 Specifications

引用標準 Reference Standard	GB11305			
工作溫度範圍 Operating Temperature Range	-25°C to +85°C			
電容值範圍與測試條件 Capacitance Range and Test Condition	682 PF ~ 220000PF measured at 1K Hz ± 10%, 0.1 Vrms, 25°C			
絕緣電阻 Insulation Resistance (IR)	Not less than 1,000MΩ or (20/CR)MΩ whichever is the smaller CR:Capacitance(μF)			
工作電壓 Working voltage (W.V.)	50V 100VDC			
測試條件 Test Condition	額定電壓 Rated Voltage	測試電壓 Test Voltage	時間 Time	工作電流 Current
	W.V. ≤ 50V	3.0 × W.V.	1~5sec	≤50mA
	50V < W.V. ≤ 100V	2.0 × W.V.		
材質特性 Material properties	Y5U		Y5V	
損耗角 Dissipation Factor(Q)	≤5.0%		≤5.0%	
容量變化 Cap. Change	+22%, -56% max		+30%, -80% max	
容量偏差 Capacitance Tolerance	M ± 20%, Z + 80% - 20%, P + 100% - 10%			

測試參考溫度: 25 °C
The reference test temperature: 25 °C

DC. Capacitor Dimension

DC. 陶瓷電容器 外型尺寸表

Rated Voltage (VDC)	Temp.char / capacitance range (pF)					Dimension (mm)		
	C NPO	S SL	B Y5P	E Y5U	F Y5V	D (max)	F	T (max)
50V (1H)	0.5~56	62~201	101~222	102~682	102~104	5.5	2.5/5.0	3.0
	62~82	-	332~472	-	104	6.5	2.5/5.0	3.0
	85~151	221~391	-	822~103	104~224	7.0	2.5/5.0	3.0
	181~221	471~561	682	-	-	9.0	2.5/5.0	3.0
	271~331	681~821	822~103	-	-	10.0	2.5/5.0	3.0
	-	102	104	-	-	12.0	2.5/5.0	3.0
500V (2H)	0.5~33	47~121	101~561	-	102~332	5.5	2.5/5.0	3.0
	36~56	151	681~102	102~222	-	6.0	2.5/5.0	3.0
	-	181	152	272~392	392~562	7.0	2.5/5.0	3.0
	68~82	221~271	182~222	472~562	682	8.0	2.5/5.0	3.0
	101	-	272	682	-	8.5	2.5/5.0	3.0
	-	331~391	-	-	822~103	9.0	2.5/5.0	3.0
	-	-	332~392	-	-	9.5	2.5/5.0	3.0
	-	471	-	822~103	203~223	10.5	2.5/5.0	3.0
	-	-	472	-	-	11.0	2.5/5.0	3.0
	-	-	682	-	-	12.5	2.5/5.0	3.0
1KV (3A)	0.5~27	47~68	101~681	102~122	102~272	6.0	5.0/7.5	4.0
	33~47	82~101	821~102	152~222	332~472	7.0	5.0/7.5	4.0
	-	151~181	122~152	302~332	-	7.5	5.0/7.5	4.0
	56~101	221	-	392	562~682	8.0	5.0/7.5	4.0
	-	221~391	182~222	472	822~103	9.0	5.0/7.5	4.0
	-	471	-	502~562	103	9.5	5.0/7.5	4.0
	-	-	302~392	-	-	11.0	5.0/7.5	4.0
	-	-	472	822~103	-	12.0	5.0/7.5	4.0
	-	-	682	-	203~333	14.5	5.0/7.5	4.0
	-	-	103	-	473	17.5	5.0/7.5	4.0
2KV (3D)	0.5~22	30~56	101~471	-	102~222	6.0	5.0/7.5	4.0
	27	-	-	102~152	-	6.5	5.0/7.5	4.0
	30~47	68	561~681	-	222~332	7.0	5.0/7.5	4.0
	-	-	821~102	-	-	7.5	5.0/7.5	4.0
	-	82~101	-	222	392	8.0	5.0/7.5	4.0
	-	121~151	-	332	472	9.0	5.0/7.5	4.0
	-	221	222	472	562~682	10.0	5.0/7.5	4.0
	-	271~391	-	562	822~103	11.0	5.0/7.5	4.0
	-	471	332	103	-	14.0	5.0/7.5	4.0
	-	-	472	-	223	16.0	5.0/7.5	4.0

尺寸和公差 Dimensions and Tolerance

F = 2.5 or 5.0 or 6.35 or 7.5 ± 0.8 mm

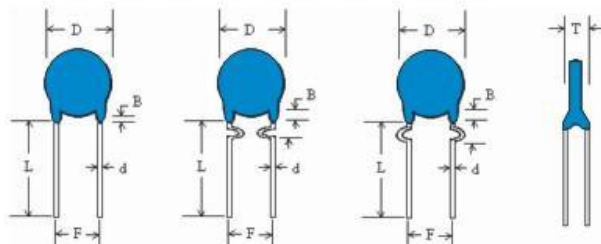
B = 3.0 mm max for FS

d = 0.55 mm ± 0.05 mm

L = 3 ~ 33 mm.

■ 以上為標準尺寸, 特殊規格要求請詢問確認

■ The size is usual goods, special Request to conferred on the Side.



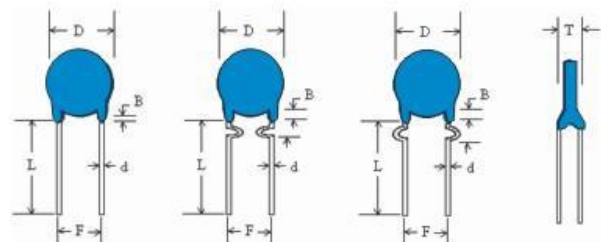
DC. Capacitor Dimension

DC. 陶瓷電容器 外型尺寸表

Rated Voltage (VDC)	Temp.char / capacitance range (pF)					Dimension (mm)		
	C NPO	S SL	B Y5P	E Y5U	F Y5V	D (max)	F	T (max)
3KV (3F)	0.5~5	5~51	101~391	-	102	6.5	7.5/9.5	5.0
	-	56~75	471	102~152	222	7.5	7.5/9.5	5.0
	-	82~101	681	-	-	8.5	7.5/9.5	5.0
	-	-	102	222	332	9.0	7.5/9.5	5.0
	-	-	-	-	472	9.5	7.5/9.5	5.0
	-	-	-	332~472	-	11.0	7.5/9.5	5.0
	-	-	-	-	103	14.5	7.5/9.5	5.0
4KV (3G)	0.5~5	5~51	101~331	471	102	6.5	7.5/9.5	5.0
	-	56~75	471~681	561~102	152~222	7.5	7.5/9.5	5.0
	-	82~101	102	-	332	9.0	7.5/9.5	5.0
	-	-	-	222	392~472	9.5	7.5/9.5	5.0
	-	-	-	332	-	11.0	7.5/9.5	5.0
	-	-	-	-	562~682	11.5	7.5/9.5	5.0
	-	-	-	472	-	13.0	7.5/9.5	5.0
6KV (3J)	0.5~5	10~82	101~151	471	102	7.0	7.5/9.5	6.0
	-	-	221~331	561~102	-	8.0	7.5/9.5	6.0
	-	-	-	-	152	8.5	7.5/9.5	6.0
	-	-	471~681	152	222	9.0	7.5/9.5	6.0
	-	-	-	222	332	11.0	7.5/9.5	6.0
	-	-	102	332	392~472	12.0	7.5/9.5	6.0
	-	-	-	472	-	15.0	7.5/9.5	6.0
8KV (3F)	3~10	10~27	101~151	-	-	8.0	9.5/12.5	7.0
	-	-	221~271	471~561	102	9.0	9.5/12.5	7.0
	10~18	33~47	331~391	681~102	122~152	10.0	9.5/12.5	7.0
	22~33	56~82	471~561	122	182~272	12.0	9.5/12.5	7.0
	-	-	681	-	-	13.0	9.5/12.5	7.0
	39~47	101~121	821~102	152~182	332~392	14.0	9.5/12.5	7.0
	56	151	-	222	472	16.0	9.5/12.5	7.0
	68	-	-	272~332	562~682	18.0	9.5/12.5	7.0
	-	-	-	392	-	20.0	9.5/12.5	7.0
-	-	-	472	-	22.0	9.5/12.5	7.0	

■ 尺寸和公差 Dimensions and Tolerance
 F = 7.5 or 9.5 or 10.0 or 12.5 ± 0.8 mm
 B = 3.0 mm max for FS
 d = 0.55 mm ± 0.05 mm
 L = 3 ~ 33 mm.

■ 以上為標準尺寸,特殊規格要求請詢問確認
 ■ The size is usual goods, special Request to conferred on the Side.



DC. Capacitor Dimension

DC. 陶瓷電容器 外型尺寸表

Rated Voltage (VDC)	Temp.char / capacitance range (pF)					Dimension (mm)		
	C NPO	S SL	B Y5P	D Y5T	E Y5U	D (max)	F	T (max)
10KV (4A)	10~22	33~68	101~151	101~221	221~331	8.0	9.5/12.5	8.0
	33	82	-	-	-	9.0	9.5/12.5	8.0
	47	101~151	181~221	331~471	471~681	10.0	9.5/12.5	9.0
	68	221	331~471	681	102	12.0	9.5/12.5	9.0
	101	-	681	102	152	14.0	9.5/12.5	9.0
	-	-	102	-	222	16.0	9.5/12.5	9.0
	-	-	-	-	332	20.0	9.5/12.5	9.0
12KV (4B)	10~15	33~47	-	-	-	8.0	9.5/12.5	9.0
	22	-	101	101~221	-	9.0	9.5/12.5	9.0
	33	68	151~221	331	221~471	10.0	9.5/12.5	9.0
	47	-	-	471	-	11.0	9.5/12.5	10.0
	-	82~101	331~471	-	681	12.0	9.5/12.5	10.0
	68	-	-	681	102	13.0	9.5/12.5	10.0
	-	151~221	681	-	-	14.0	9.5/12.5	10.0
	101	-	-	102	-	15.0	9.5/12.5	10.0
	-	-	102	-	152	16.0	9.5/12.5	10.0
15KV (4C)	10	22	-	101~181	221	9.0	9.5/12.5	10.0
	15	33	101~181	221~331	331	10.0	9.5/12.5	10.0
	-	47	-	-	-	11.0	9.5/12.5	10.0
	22	68	221~331	471	471~681	12.0	9.5/12.5	11.0
	-	82	-	681	751~821	13.0	9.5/12.5	11.0
	33	101	471	-	102	14.0	9.5/12.5	11.0
	47	-	-	102	-	15.0	9.5/12.5	11.0
	-	151	681	-	-	16.0	9.5/12.5	11.0
	68	-	102	152	152	18.0	9.5/12.5	11.0
20KV (4D)	10	22	-	101~181	221	9.0	9.5/12.5	12.0
	15	33	101	221	331	10.0	9.5/12.5	12.0
	22	47	151	331	-	11.0	9.5/12.5	12.0
	33	68	181~221	471	471~681	12.0	9.5/12.5	12.0
	-	-	331	-	751~821	13.0	9.5/12.5	12.0
	47	82~101	-	681	102	14.0	9.5/12.5	12.0
	-	-	471	-	-	15.0	9.5/12.5	12.0
	-	-	-	102	-	16.0	9.5/12.5	12.0
	68	-	681	-	152	18.0	9.5/12.5	12.0
101	-	102	-	222	20.0	9.5/12.5	12.0	

尺寸和公差 Dimensions and Tolerance

F = 9.5 or 10.0 or 12.5 ± 0.8 mm

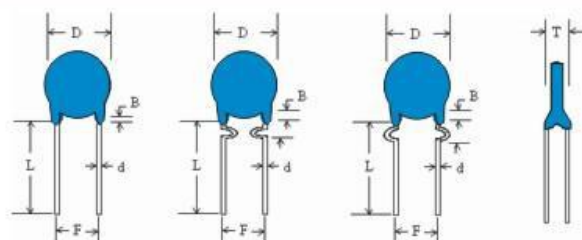
B = 3.0 mm max for FS

d = 0.55 mm ± 0.05 mm

L = 3 ~ 33 mm.

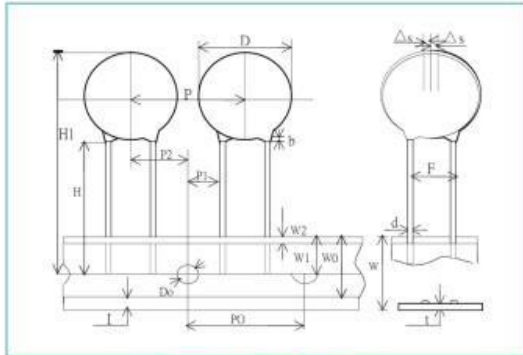
以上為標準尺寸, 特殊規格要求請詢問確認

The size is usual goods, special Request to conferred on the Side.

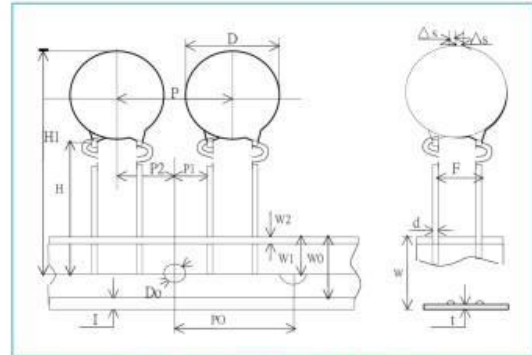


Taping Specifications

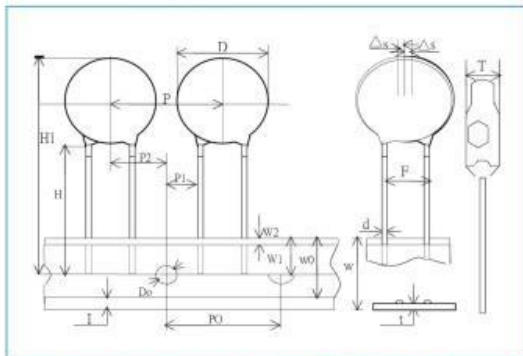
Taping (Radial) -- Lead Spacing $F = 5.0 / 6.35 / 7.5 \pm 0.8$



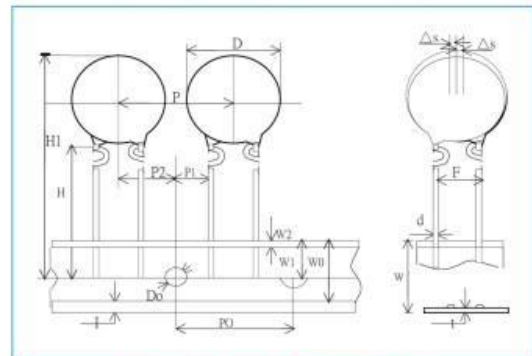
Straight 直脚 (FS)



Outside crimped 外灣(FO)



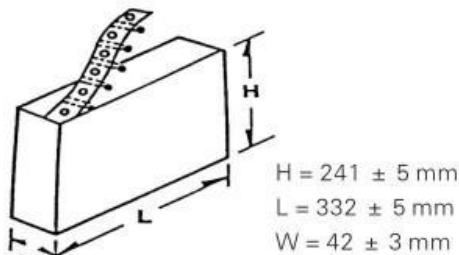
Vertical crimped 上下灣 (AA)



Inside crimped 內灣 (FI)

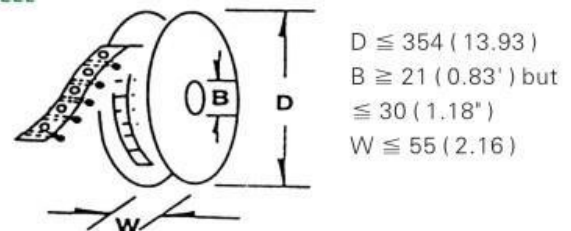
Item	Code	Standard (mm)	Tolerance (mm)	Item	Code	Standard(mm)	Tolerance (mm)
Pitch of component	P	12.7	± 1.0	Feed hole center to lead center	P1	3.65/3.25/2.6	± 0.8
Feed hole pitch	P0	12.7	± 0.3	Feed hole center to body center	P2	6.35	± 1.3
Component alignment R-L	Δs	0.0	± 2.0	Lead to lead distance	F	5.0/6.35/7.5	± 0.8
Tape width	W	18	± 0.5	Hold position	W1	9.0	+0.75/-0.05
Hold down tape width	W0	10.0	min	Height of component from tape center	H	20.0	+1.5/-1.0
Hold down tape position	W2	1.5	± 1.5			16.0	± 1.0
Component height	H1	33.0	max	Lead wire protrusion	l	6.0	min
Feed hole diameter	D0	4.0	± 0.3	Diameter of Lead	d	0.6	+0.06/-0.05
Total tape thickness	t	0.6	± 0.2	Diameter of Disco	D	See table of each series	
Coating Extension	b	3.0	max	Thickness of Capacitor Body	T	Differ in each product	

AMMO PACK



Acceptable to standard radial type cartridge.
可接受標準輻射式盒包裝

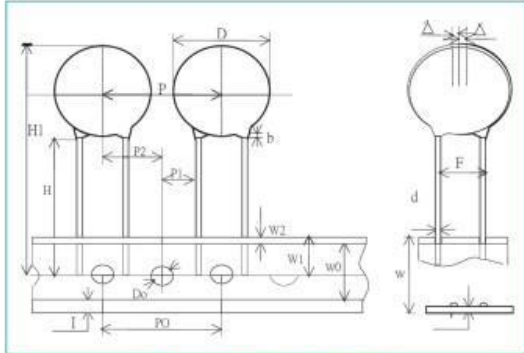
REEL



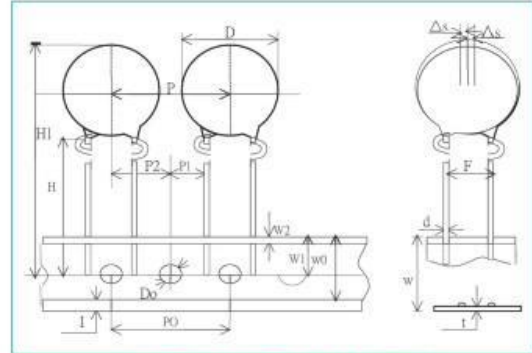
Acceptable to standard radial type cartridge with a few extra accessories. Reeled axials are also acceptable to standard axial type cartridge with a few accessories. 可接受標準輻射式盒包裝和少部分額外配件，捲筒軸也可以接受標準軸類型和少部分額外配件

Taping Specifications

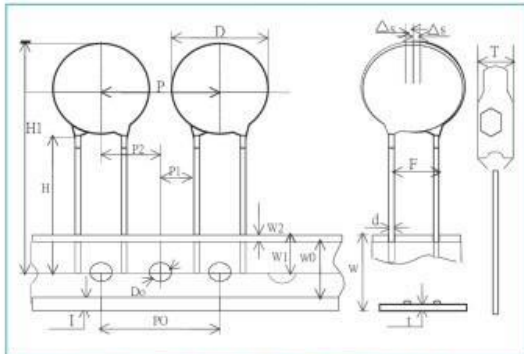
Taping (Radial) -- Lead Spacing $F = 9.5 / 12.5 \pm 0.8$



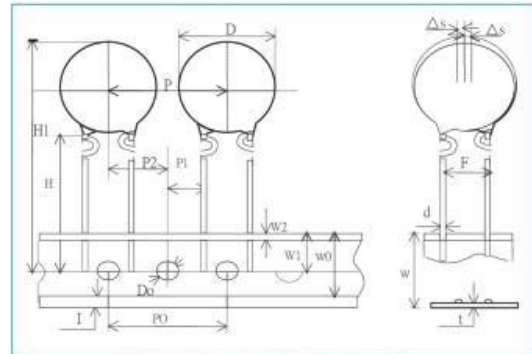
Straight 直脚 (FS)



Outside crimped 外灣 (FO)



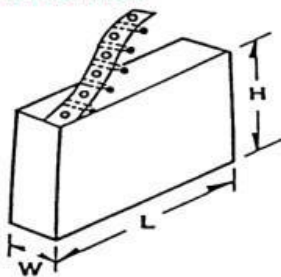
Vertical crimped 上下灣 (AA)



Inside crimped 內灣 (FI)

Item	Code	Standard (mm)	Tolerance (mm)	Item	Code	Standard (mm)	Tolerance (mm)	
Pitch of component	P	25.4	± 1.0	Feed hole center to lead center	P1	7.95/6.35	± 0.8	
Feed hole pitch	P0	25.4	± 0.3	Feed hole center to body center	P2	12.7	± 1.3	
Component alignment R-L	Δs	0.0	± 2.0	Lead to lead distance	F	9.5/12.5	± 0.8	
Tape width	W	18	± 0.5	Hold position	W1	9.0	+0.75/-0.05	
Hold down tape width	W0	10.0	min	Height of component from tape center	Straight Crimped	H	20.0	+1.5/-1.0
Hold down tape position	W2	1.5	± 1.5				16.0	± 1.0
Component height	H1	33.0	max	Lead wire protrusion	I	6.0	min	
Feed hole diameter	D0	4.0	± 0.3	Diameter of Lead	d	0.6	+0.06/-0.05	
Total tape thickness	t	0.6	± 0.2	Diameter of Diso	D	See table of each series		
Coating Extension	b	3.0	max	Thickness of Capacitor Body	T	Differ in each product		

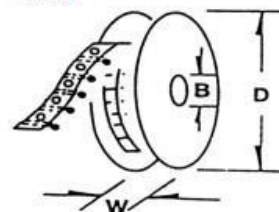
AMMO PACK



H = 241 ± 5 mm
L = 332 ± 5 mm
W = 42 ± 3 mm

Acceptable to standard radial type cartridge.
可接受標準輻射式盒包裝

REEL



$D \leq 354$ (13.93)
 $B \geq 21$ (0.83") but
 ≤ 30 (1.18")
 $W \leq 55$ (2.16)

Acceptable to standard radial type cartridge with a few extra accessories. Reeled axials are also acceptable to standard axial type cartridge with a few accessories.
可接受標準輻射式盒包裝和少部分額外配件，捲筒軸也可以接受標準軸類型和少部分額外配件