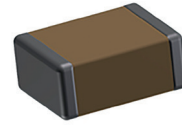


• Applications

All type of implantable medical device :
cardiac rythm equipment, cochlear implant,...



RoHS
compliant

• Electrical Parameters

Operating Temperature - 55°C, + 125°C

Electrical Characteristics at + 25°C unless otherwise specified

Insulation Resistance (IR) CECC 32101-801 §4.6.3.

25°C/Un 10² GOhm min or 1000 Ohm-Farad min whichever is less
125°C/Un 10 GOhm min or 100 Ohm-Farad min whichever is less

Dielectric Withstanding Voltage CECC 32101-801 §4.6.3.

250% rated voltage for 5s ± 1s, 50mA max

Temperature Coefficient

NPO : ± 30ppm/°C

X7R : ± 15% with 0Vdc applied

Dissipation Factor CECC 32101-801 §4.6.3.

NPO : 0.1% max measured at 1Vrms, 1kHz except for NPO values ≤ 1000pF measured at 1MHz

X7R : 2.5% max except 25V, 3.5% max

• Quick Reference Data

X7R	0402	0603
	16V	100pF - 100nF
25V	100pF - 47nF	100pF - 220nF
50V	100pF - 22nF	100pF - 100nF

NPO	0402	0603
	16V	0.22pF - 1nF
25V	0.22pF - 820pF	0.22pF - 1.5nF
50V	0.22pF - 470pF	0.33pF - 1nF

• Ordering Information

0402	Y	220	J	A	H	B	XX	MLS
SIZE	DIELECTRIC	CAPACITANCE	TOLERANCE	VOLTAGE	TERMINATION	PACKAGING	SPECIAL PARAMETERS	HIGH RELIABILITY TESTING
0402 0603	Y = X7R A = NPO	Expressed in picofarads (pF). The first two digits are significant, the third digit give the number of noughts. Example : 102 = 1000pF	F = ± 1% G = ± 2% J = ± 5% K = ± 10%	Q = 10V J = 16V X = 25V A = 50V B = 100V	F = AgPd H = Ni-63%Tin 36%Lead 2%Silver X = Ni-100%Tin	B = Tape V = Bulk W = Waffle Pack	Specific fasting	Burn in 2Un / 168 hours / 125°C

• Dimensions in millimeters

Designation	0402	0603
Length (L)	1.00 ± 0.1	1.60 ± 0.1
Width (W)	0.50 ± 0.1	0.80 ± 0.1
Thickness (T)	0.50	0.75
Termination (P)	Min	0.10
	Max	0.45

